

## CHECKOUT INSTALLATION NOTES

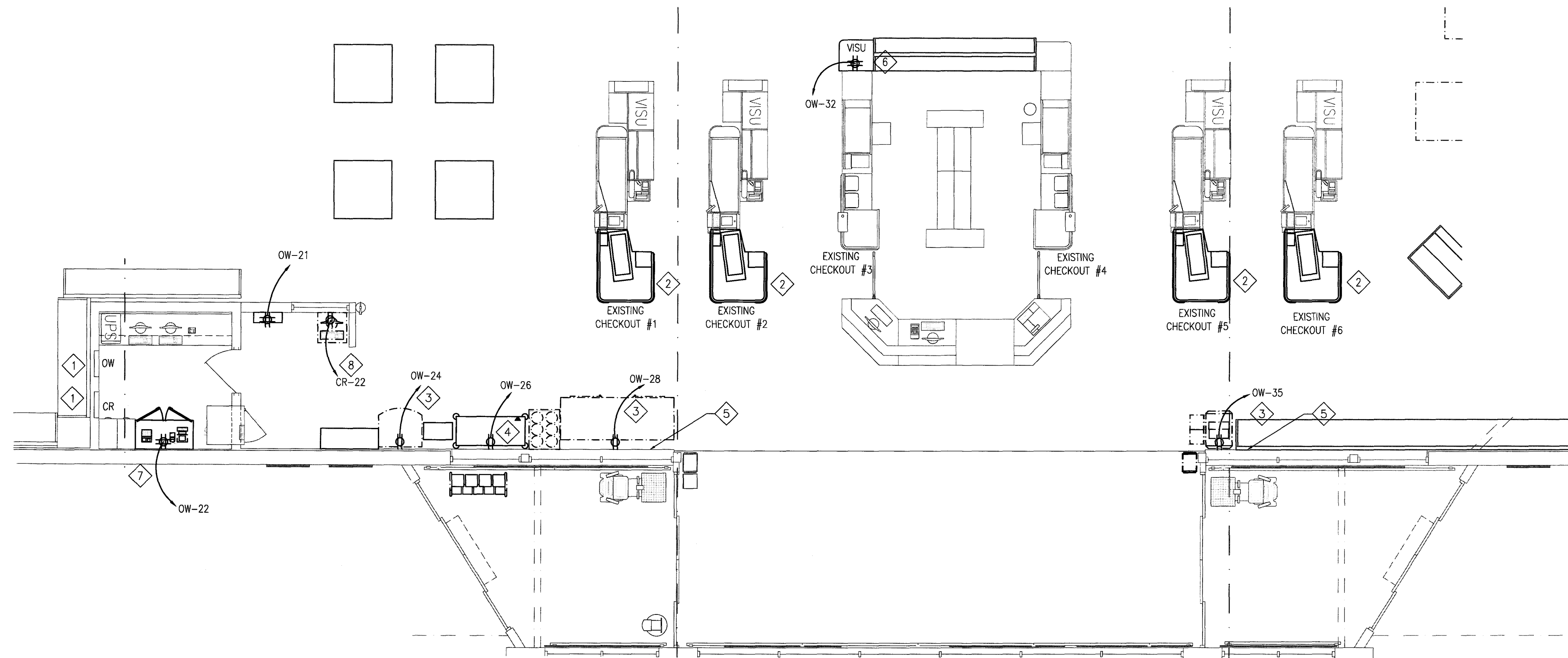
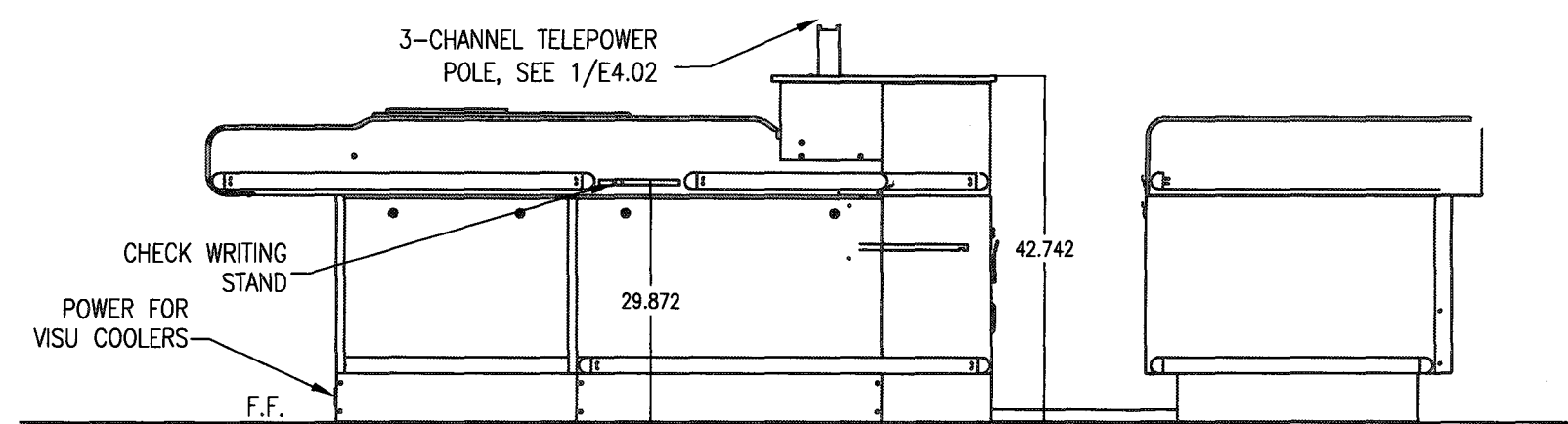
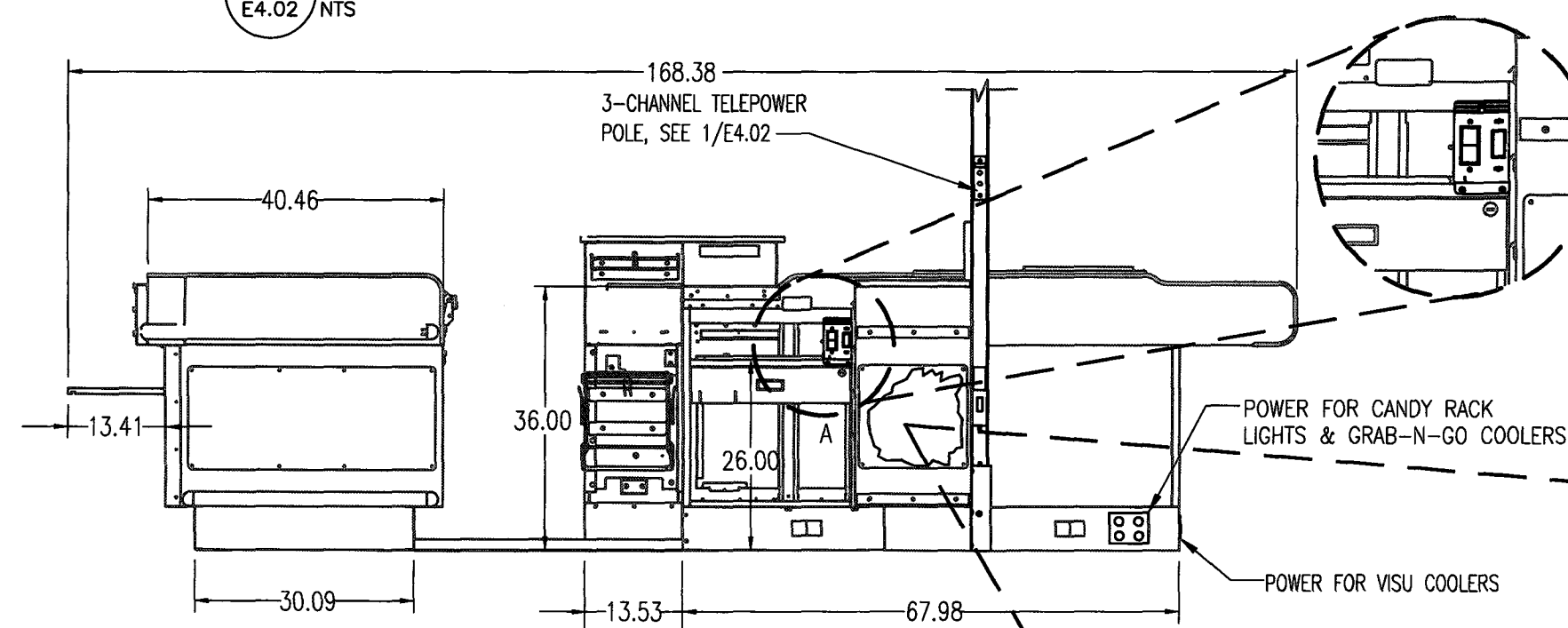
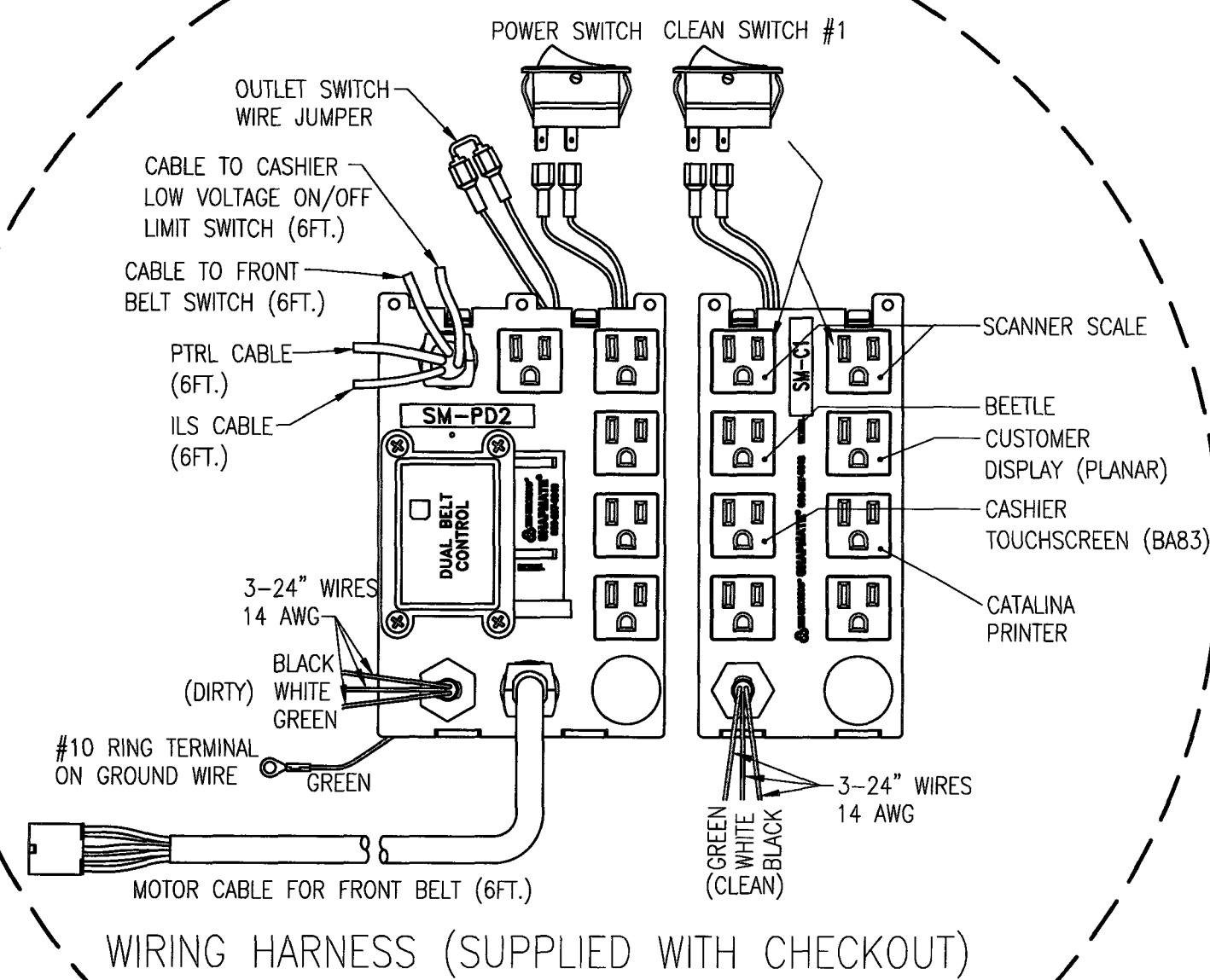
1. SEE SHEET E4.03 FOR WORKROOM, CUSTOMER SERVICE AND CHECKOUT COMMUNICATION WIRING.
2. CASH REGISTER CIRCUITS SHALL BE PROVIDED WITH DEDICATED NEUTRAL AND GREEN ISOLATED GROUND.
3. BX CABLES SHALL BE INSTALLED WITH INSULATED THROATS AND APPROVED CONNECTORS.
4. ELECTRICAL CONTRACTOR SHALL LEAVE A PULL STRING IN CEILING J-BOX AT COMMUNICATIONS SECTION OF "TELE-POWER" POLE FROM THE COMMUNICATION JUNCTION BOX TO EACH CHECKOUT FOR USE BY OTHERS.
5. ELECTRICAL CONTRACTOR SHALL COORDINATE TELEPOLE LOCATIONS WITH LIGHTING & HVAC PRIOR TO INSTALLATION TO MINIMIZE INSTALLATION CONFLICTS.

## CHECKOUT WIRING LEGEND

- DIRTY CIRCUIT No. 1 (BELT MOTOR, STAND LIGHT, CANDY RACK LIGHTS GEN. RECEPTACLES)
- DIRTY CIRCUIT No. 2 (VSU COOLERS)
- CLEAN CIRCUIT No. 1 (REGISTER, CATALINA, DEBIT CARD, SCANNER & SCALE, SPARE RECEPT.)

## ELECTRICAL WIRING KEY NOTES

1. EXISTING PANEL SCHEDULE FOR PANELS CR AND OW ARE NOT LABELED CORRECTLY. ELECTRICAL CONTRACTOR TO TRACE AND FIELD VERIFY EACH CIRCUIT IN PANEL CR AND PANEL OW AND PROPERLY LABEL CIRCUITS IN TYPED WRITTEN PANEL SCHEDULE IN EACH PANEL.
2. ELECTRICAL CONTRACTOR TO RECONNECT EXISTING POWER FOR NEW CHECK STAND, BELTED END ADD PARTS IF NEEDED.
3. ELECTRICAL CONTRACTOR TO CONNECT RELOCATED EQUIPMENT TO INDICATED CIRCUIT.
4. ELECTRICAL CONTRACTOR TO CONNECT NEW EQUIPMENT TO NEW CIRCUITS.
5. CONDUITS ON THIS WALL TO BE RECESSED BEHIND GYPSUM WALL BOARD.
6. MOUNT QUAD OUTLET FLUSH IN THE CHECKOUT STAND FOR THE VSU COOLER(S) LIGHTING AT THIS LOCATION. RECEPTACLE TO BE MOUNTED 1'-4" A.F.F. IN THE SIDE NEAREST THE CASHIER AND ACCESSIBLE TO THE VSU COOLER PIGTAIL CONNECTION. FACE PLATE TO BE PAINTED TO MATCH CHECKOUT STAND COLOR. COORDINATE LOCATION WITH PRE-WIRED CONTROLS MOUNTED INSIDE THE CHECKOUT.
7. ALL POWER OUTLETS AND JUNCTION BOXES BEHIND NEW CABINET SHALL BE LOCATED AT 48" AFF.
8. VERIFY EXISTING CONDITIONS- CIRCUIT TO BE DEDICATED FED FROM CR PANEL. RE-CIRCUIT AS NECESSARY.

1 ENLARGED ELECTRICAL POWER PLAN  
E4.02 / SCALE: 3/16" = 1'-0"2 SERVICE SIDE ELECTRICAL ELEVATION  
E4.02 / NTS3 ASSOCIATE SIDE ELECTRICAL ELEVATION  
E4.02 / NTS

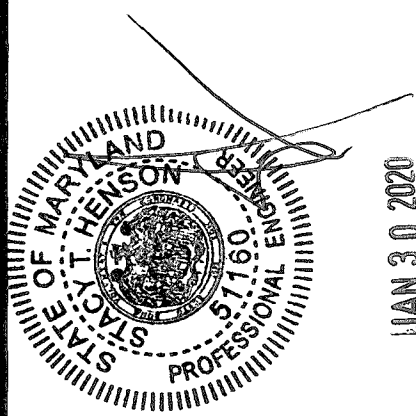
INTERPLAN

ARCHITECTURE  
ENGINEERING  
INTERIOR DESIGN  
PROJECT MANAGEMENT604 COURTLAND STREET  
SUITE 100  
ORLANDO, FLORIDA 32804  
PH 407.645.5008  
FX 407.629.9124

ARCHITECT'S SEAL:

PROFESSIONAL CERTIFICATION: I  
HEREBY CERTIFY THAT THESE  
DOCUMENTS WERE PREPARED OR  
APPROVED BY ME, AND THAT I AM A  
FULLY LICENSED ENGINEER UNDER  
THE LAWS OF THE STATE OF  
MARYLAND  
LICENSE NO. 05-51160  
EXPIRATION DATE: 6/21/2021

ENGINEER'S SEAL:



REVISIONS

NO DATE REMARKS

FOOD LION  
2118 Executive Drive, Salisbury, NC 28145  
Telephone: 784.633.8259  
Food Lion is a DISCOUNT AMERICA company.FOOD LION  
REMODEL  
STORE #1662  
410 SANDY SPRING RD  
LAUREL, MD 20707

PROJECT NO: 2019.0893

DATE: 1-30-20

18 OF 24

E4.02

CUST. SERV. WORKROOM &  
CHECK OUT POWER PLAN

CHECKED: BKJ DRAWN: MW

CORBIR - 01/29/2020 4:47:52 AM